

# **Get Ready for WSSDA's 2017 Legislative Assembly!**

August 30, 2017

# Overview & 1<sup>st</sup> Reading

- ***WSSDA's FINAL 2017 Session Summary*** is now available & can be found at <https://www.wssda.org/Legislative/LegislativeUpdates.aspx>
- *launched a [new Web page](#) which helps with districts navigate new education funding policy legislation.*
- Link to the newly launched web site regarding the capital budget delay (<https://www.waschoolconstruction.org/>) , along with a pdf (attached) of similar content. The ESD 112 school facilities center is obviously the lead in these communications, however Brian Sims, on behalf of WSSDA, helped provide and review content (hence reference to WSSDA in the attributions).
- **Legislative Assembly** – 22-23 Sep (Friday & Saturday); myself, Director Kuh, & Supt Neal attending.
- Agenda is in your packages; for those in attendance - The proposals for the 2017 Legislative Assembly can also be found / available at: <https://wssda.org/Events/LegislativeAssembly.aspx>. You may also review assembly resources and watch the Get Ready for Assembly Webinar.

# Partners & Resources

- WASA (Washington Association of School Administrators) – This week in Olympia
- AWSP (Association of Washington Principles) – Weekly updates.
- SBE (State Board of Education) – weekly updates
- OSPI (Office of Superintendent of Public Instruction)
- WALEG (Washington Legislatures)
- WBA (Washington Business Alliance)
- WEA (Washington Education Association)
- WPD (Washington Paramount Duty)

# Welcome!

Please type your name, school district / organization, and role into the chat box!

- **Logistics**

- Webinar materials

<https://wssda.org/Events/Legislative-Assembly>

- Q&A / Comment process

- Chat and Question Boxes

- Phones on mute

- **Introductions**

- WSSDA Staff

- Jessica Vavrus, Gov't Relations Director, [j.vavrus@wssda.org](mailto:j.vavrus@wssda.org) and/or 360-890-5867
- Tricia Kimbrough, Legislative Coordinator, [t.kimbrough@wssda.org](mailto:t.kimbrough@wssda.org)

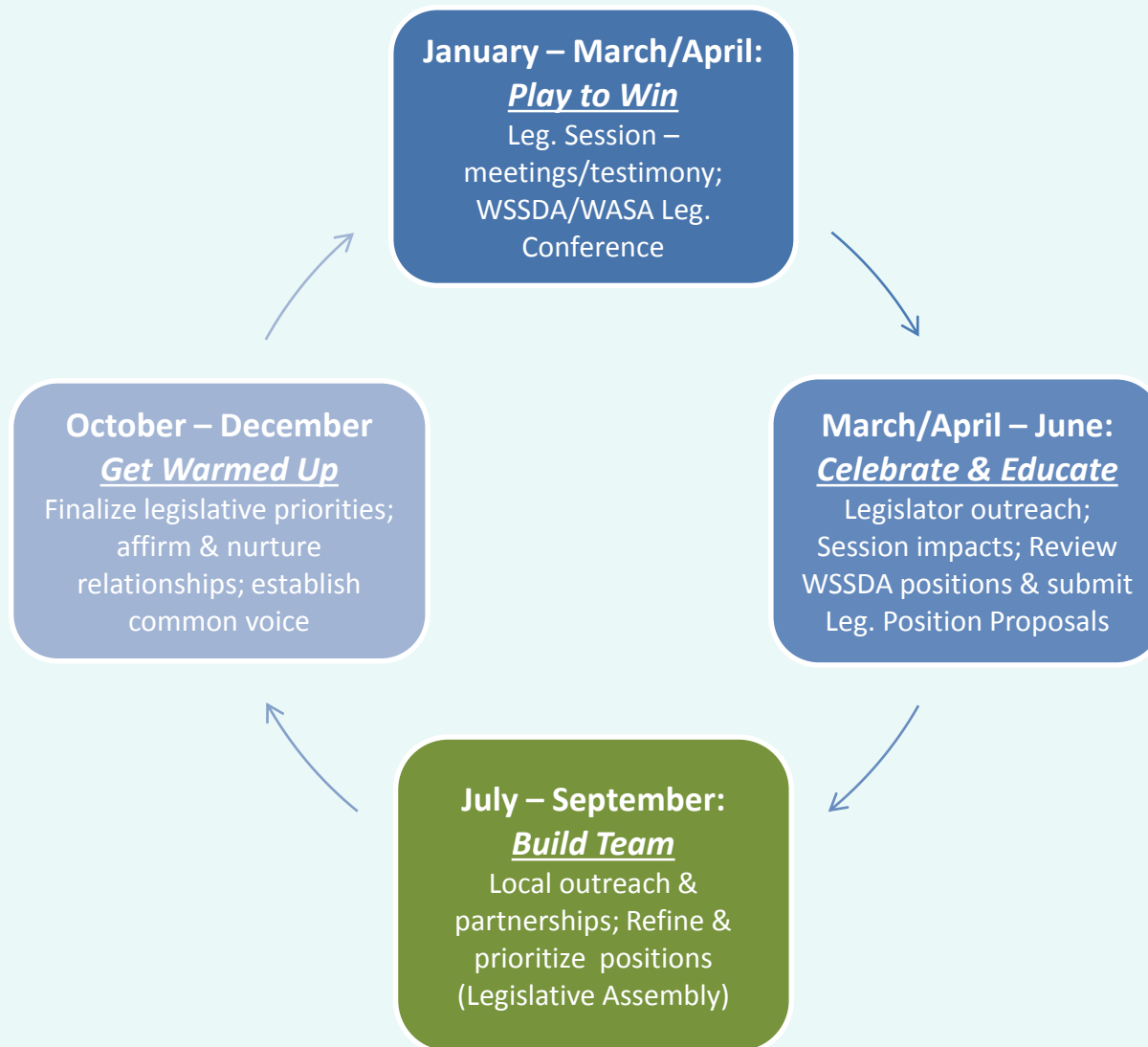
## **Webinar Materials (3 documents):**

- PowerPoint presentation (ppt)
- Legislative Assembly Web Page Link
- 2017 Legislative Assembly Handbook – Position Listing (pdf)

# Today's Focus

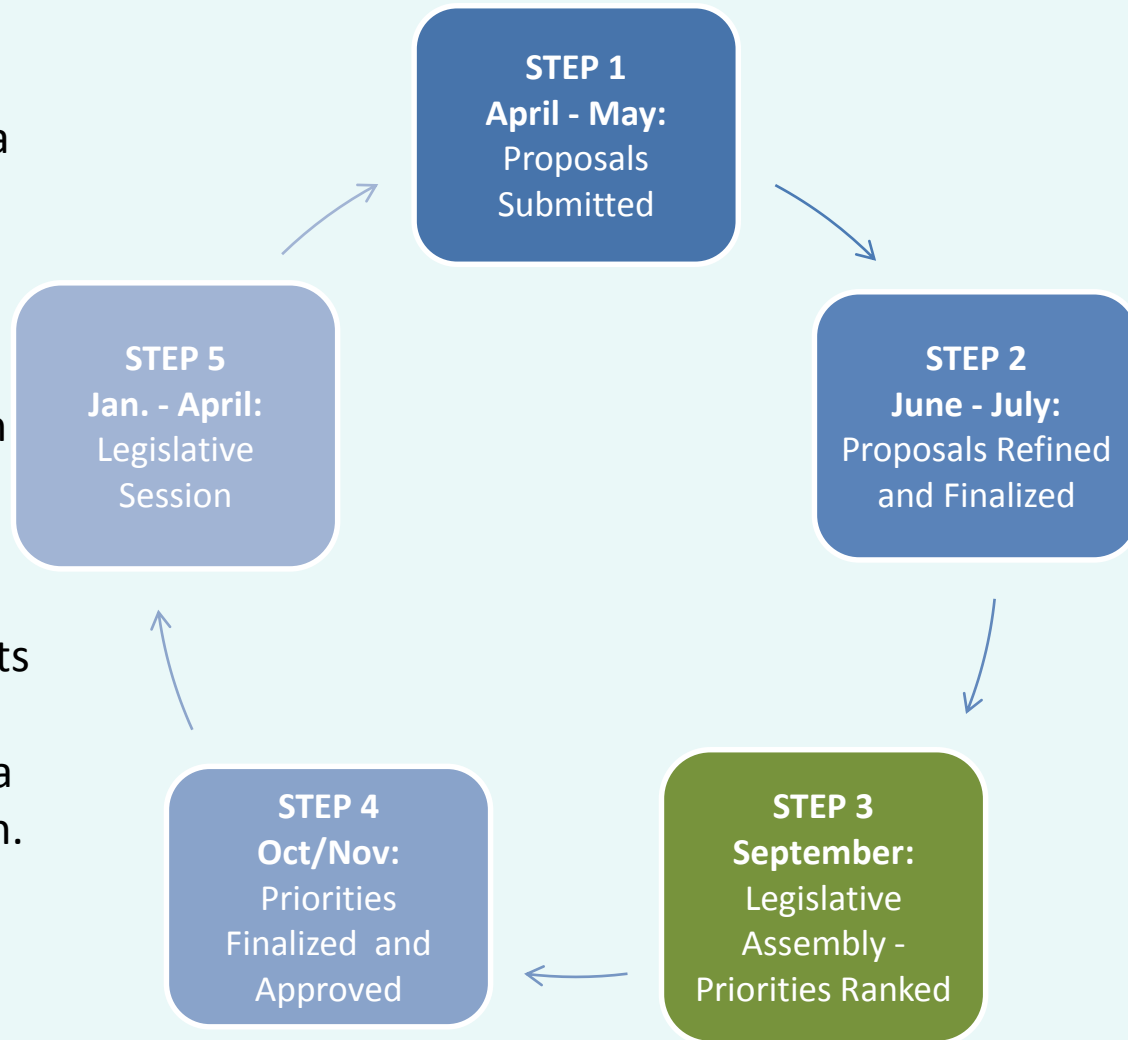
- WSSDA's year-long cycle for legislative advocacy
  - The role of WSSDA's Legislative Assembly in defining the association's legislative priorities
- 2017's Legislative Assembly Overview
- Foundations: WSSDA's legislative positions and priorities
  - 2017 Assembly Handbook; 2017 Position Resources
- How to get involved, who should attend, & ways to engage your colleagues
- Next steps & Key Dates

# WSSDA's Year-Long Advocacy Cycle



# Annual Legislative Positions: Review & Prioritization Process

- WSSDA's Legislative Assembly is a key event that shapes WSSDA's annual Legislative Priorities.
- WSSDA's Legislative Committee solicits input from all Washington school boards on issues affecting public education.
- The Legislative Assembly then acts on these proposals and creates a comprehensive legislative agenda for the coming Legislative Session.



# 2017 Legislative Assembly Program

<https://wssda.org/Events/LegislativeAssembly.aspx>

September 22 & 23, 2017, Tukwila, Southcenter DoubleTree Hotel

## Pre-Assembly Day (Friday)

- WSSDA task-force meetings (morning)
- “New to Assembly” luncheon
- Pre-Assembly Program – presentations on key issues/hot topics related to WSSDA’s legislative positions
- Director Area Caucus meetings

### Who attends?

- Directors, superintendents, education stakeholder partners

## Assembly Day (Saturday)

- “New to Assembly” breakfast
- Deliberation, voting, prioritizing of positions



### Who attends?

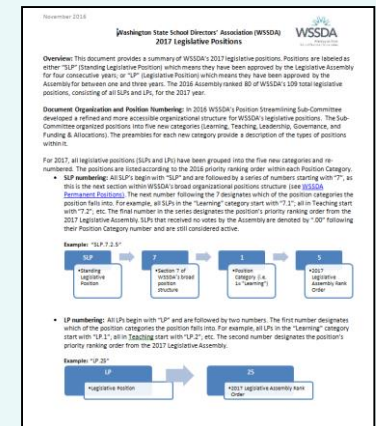
- Directors, superintendents
- Only district “delegates” are eligible to vote



# The Foundations: Results from the 2016 Legislative Assembly

<http://wssda.org/Legislative/OurPrioritiesPositions.aspx>

- 108 total legislative positions
- Standing Legislative Positions (SLPs) (76 positions)
  - Approved by the Legislative Assembly for four consecutive years
  - Reviewed annually by WSSDA Streamlining Sub-Committee (Leg. Committee + Board of Directors)
- Legislative Positions (LPs) (32 positions)
  - Approved by the Assembly for between one and three years
  - Submitted annually by school boards and/or WSSDA Legislative Committee
- 2017 position organization
  - 5 broad categories (Learning, Teaching, Leadership, Governance, Funding & Allocations); New numbering system



# The Foundations:

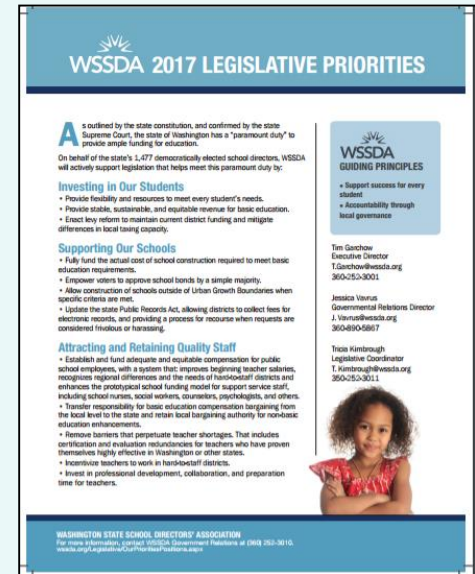
## Navigating WSSDA's 2017 Positions

- **2017 Legislative Positions**: Full compilation of WSSDA's 2017 Legislative Positions organized by category.
  - 2017 Position Quick Reference Spreadsheet (Excel)
- **2017 Position Resource 1-Pagers**: These documents group like-positions (including any pertinent WSSDA Permanent Positions) to more easily navigating WSSDA's 2017 legislative positions.
  - [K-12 Learning Standards and Assessments](#)
  - [Teacher Recruitment, Retention, Certification, and Professional Development](#)
  - [Governance Positions: Local Control, State/Local Government Provisions, Employee Provisions](#)
  - [Funding, Compensation, Levy Reform](#)
  - [K-12 Facilities and Capital Construction](#)
- **2017 Legislative Position Priority Listing**: Priority ranking results from the 2016 Legislative Assembly.

# The Foundations: 2017 WSSDA Legislative Priorities

<http://wssda.org/Legislative/OurPrioritiesPositions.aspx>

- **2016 Legislative Assembly** (September)
  - 95 school district board delegates
  - Deliberated 62 legislative positions
- **2017 Priorities** (Top 20 rankings from Leg. Assembly)
  - Invest in our students
    - Funding, levies, revenue
  - Support our schools
    - Facilities, school construction & siting
    - Public records requests
  - Attract and retain quality staff
    - Compensation
    - Bargaining
    - Teacher recruitment, retention, professional development
- **Joint Association Ed Funding Priorities**
  - Prioritized To-Do List for Education Funding



**WSSDA 2017 LEGISLATIVE PRIORITIES**

As outlined by the state constitution, and confirmed by the state Supreme Court, the state of Washington has a "paramount duty" to provide ample funding for education.

On behalf of the state's 1,477 democratically elected school directors, WSSDA will actively support legislation that helps meet this paramount duty by:

- Investing in Our Students**
  - Provide feasibility and resources to meet every student's needs.
  - Provide stable, sustainable, and equitable revenue for basic education.
  - Enact key reform to maintain current district funding and mitigate differences in local taxing capacity.
- Supporting Our Schools**
  - Fully fund the actual cost of school construction required to meet basic education requirements.
  - Empower voters to approve school bonds by a simple majority.
  - Allow construction of schools outside of Urban Growth Boundaries when specific criteria are met.
  - Update the state Public Records Act, allowing districts to collect fees for electronic records, and providing a process for review when requests are considered frivolous or harassing.
- Attracting and Retaining Quality Staff**
  - Establish and fund adequate and equitable compensation for public school employees, with a system that improves beginning teacher salaries, recognizes regional differences and the needs of hard-to-staff districts and enhances the prototypical school funding model for support services staff, including school nurses, social workers, counselors, psychologists, and others.
  - Transfer responsibility for basic education compensation bargaining from the local level to the state and retain local bargaining authority for nonbasic education enhancements.
  - Remove barriers that perpetuate teacher shortages. That includes certification and evaluation redundancies for teachers who have proven themselves highly effective in Washington or other states.
  - Incentivize teachers to work in hard-to-staff districts.
  - Invest in professional development, collaboration, and preparation time for teachers.

**WSSDA GUIDING PRINCIPLES**

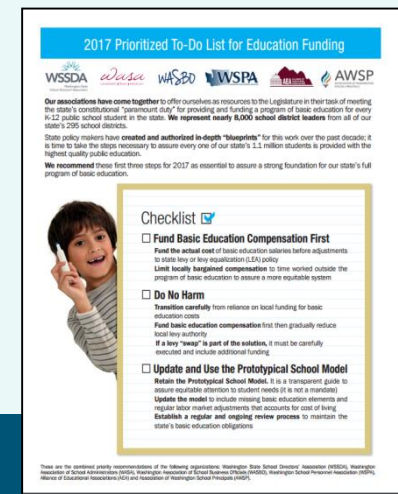
- Support success for every student
- Accountability through local governance

**WSSDA**  
Executive Director  
T.Gerschow@wssda.org  
360-253-3001

**Jessica Vanus**  
Governmental Relations Director  
J.Vanus@wssda.org  
360-890-5867

**Tricia Kimbrough**  
Legislative Coordinator  
T.Kimbrough@wssda.org  
360-253-3011

**WASHINGTON STATE SCHOOL DIRECTORS' ASSOCIATION**  
For more information, contact WSSDA Government Relations at (360) 253-3010.  
[wssda.org/Legislative/OurPrioritiesPositions.aspx](http://wssda.org/Legislative/OurPrioritiesPositions.aspx)



**2017 Prioritized To-Do List for Education Funding**

WSSDA, WSP, WSPA, and AWSP are joined together to offer ourselves as resources to the Legislature in their task of meeting the state's constitutional "paramount duty" for providing and funding a program of basic education for every K-12 public school student in the state. We represent nearly 8,000 school district leaders from all of our state's 202 school districts.

State policy makers have created and authorized in-depth "blueprints" for this work over the past decade; it is time to take the steps necessary to assure every one of our state's 1.1 million students is provided with the highest quality public education.

We recommend these first three steps for 2017 as essential to assure a strong foundation for our state's full program of basic education.

**Checklist**

- ☐ **Fund Basic Education Compensation First**  
Fund the actual cost of basic education salaries before adjustments to state levy or levy equalization (LEQ) policy.  
Limit locally bargained compensation to time worked outside the program of basic education to assure a more equitable system.
- ☐ **Do No Harm**  
Transition carefully from reliance on local funding for basic education costs.  
Fund basic education compensation first then gradually reduce local levy authority.  
If a levy "waiver" is part of the solution, it must be carefully executed and exclude additional funding.
- ☐ **Update and Use the Prototypical School Model**  
Retain the Prototypical School Model. It is a trusted guide to assure equitable attention to student needs (it is not a mandate).  
Update the model to include missing basic education elements and regular labor market adjustments that accounts for cost of living.  
Establish a regular and ongoing review process to maintain the state's basic education obligations.

These are the condensed priority recommendations of the following organizations: Washington State School Directors' Association (WSSDA), Washington Association of School Administrators (WASA), Washington Association of School Business Administrators (WASBA), Washington State Teachers' Association (WSTA), and Washington State Education Association (WSEA).

**Get Ready for WSSDA's 2017 Legislative Assembly!, 8/30/17**

# 2017 Positions for Consideration

**2017 Position Proposal Listing** – 1 document, available online

- **Regular Positions Calendar:**
  - Clarifications/minor amendments and consolidations (including eliminations (of Standing Legislative Positions (SLPs)), and discontinuations (of Legislative Positions (LPs))
  - New position proposals
  - Returning positions proposals that were adopted by the 2015 and 2016 assemblies that have not yet become SLPs
- **Standing Positions Calendar**
  - Legislative positions proposals introduced in 2014 that are in their fourth year of deliberations before they officially become “standing” positions.
- **WSSDA’s 2017 Standing Legislative Positions**
  - Newly adopted SLPs from the 2016 Legislative Assembly *and* additional SLPs from years past.

# Next Steps

- **Review 2017 position proposals and SLPs.** Get familiar with the positions that will be discussed at the assembly, along with the *2017 Position Resource Guide* soon-to-be posted on [WSSDA's Legislative Assembly Web site](#).
  - Share this “Get Ready for Assembly” webinar recording and/or slides with your board.
- **Discuss your board's top legislative positions and issues.** It is important that whoever attends the assembly on behalf of your district comes ready to discuss and prioritize these positions. In some cases you might even want to offer amendments.
- **Identify and register a delegate to attend.** It is important for as many school districts to be represented as possible, including yours!

# Who Should Attend?

- All school directors are encouraged to attend the Legislative Assembly.
  - Each board should at least identify ONE representative to attend who can advocate for the board's priorities
- District staff are also invited to attend, although only school directors may address the assembly and only one director per district may vote on each issue.
- While legislative representatives from each district normally serve as delegates to the assembly, voting credentials may be shared among attending directors at each board's discretion.

# School District participation is essential

	LA 2010	LA 2011	LA 2012	LA 2013	LA 2014	LA 2015	LA 2016
<b>Number of Districts Represented</b>	85	84	102	95	91	92	95
<b>Percentage of Districts</b>	29%	28%	35%	32%	31%	31%	34%

- Each school board designates a “delegate” with voting credentials (usually the Legislative Representative)
  - Often, boards have more than one person attend Assembly with the delegate to allow for discussions on issues
- The districts that attend, vote, and prioritize positions at the Assembly will set the course for WSSDA’s 2018 legislative platform!

# Key Dates

- **September 1-21** – Boards review WSSDA positions and proposals; Identify priorities
- **September 22 & 23** – 2017 Legislative Assembly, Tukwila
- **October / Early November** – WSSDA Legislative Committee and Board of Directors consider priority ranking and adopt 2018 Legislative Platform
- **November 16-19** – WSSDA Annual Conference, 2018 Platform Launch
- **January 8, 2018** – 2018 Legislative Session begins





Use the Chat/Question Box

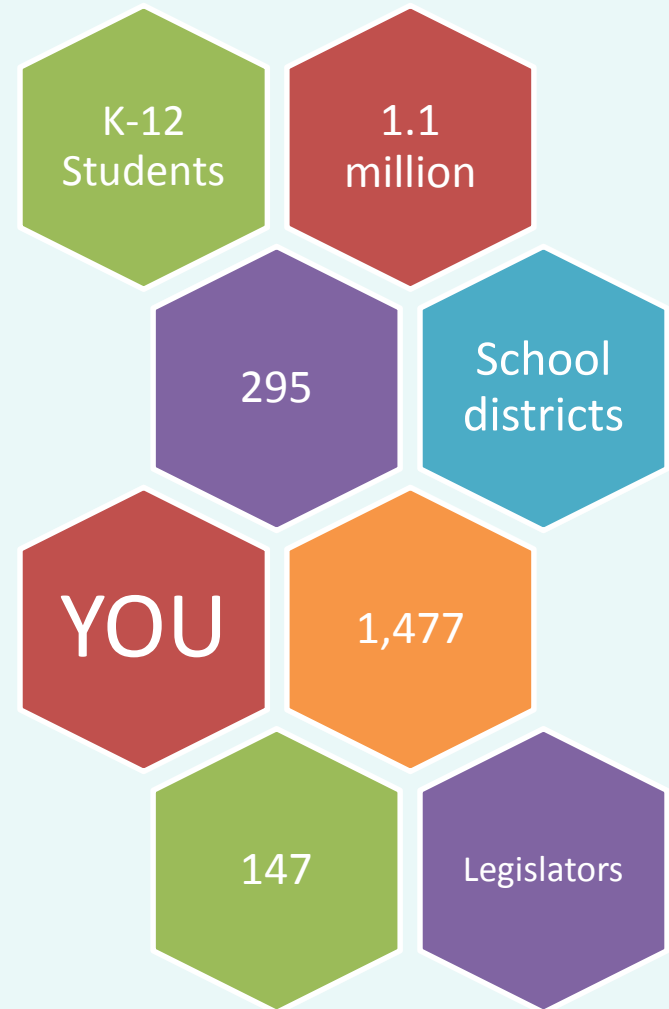
Or

Contact: Jessica Vavrus, Gov't Relations Director, [j.vavrus@wssda.org](mailto:j.vavrus@wssda.org) ;  
360-890-5867

**QUESTIONS / COMMENTS?**

# In closing....Why are YOUR legislative partnerships & priorities important?

- YOU'VE been entrusted in your community
- Power in numbers and voice
  - *How can we better engage / involve Leg. Reps across the state??*
- Decisions made in Olympia DO and WILL affect your district



# Example of three current SLP's

- **7.1.20 Forest Revenue Apportionment Withholding**
- WSSDA shall initiate and/or support legislation preventing the State from withholding monies from the State's monthly apportionment in the amount equal to state forest revenue or to the federal forest fees received by school districts from the federal government. (Adopted 2013)
- **7.1.12 Full Funding of Basic Education**
- WSSDA shall initiate and/or support legislation that fully funds and implements all aspects of Washington's redefined program of Basic Education as outlined in ESHB 2261. (Adopted 2012)

## 7.1.16 School Construction

- **WSSDA supports “ample provision” for school construction through state policies that:**
- Fund school construction needs when districts are determined eligible.
- Maintain a reliable system of funding that supports adequate planning at the local level.
- **Provide specific sources of revenue to support and enhance state trust revenue.**
- Give highest priority to projects that address un-housed student needs, either through new construction or remodeling.
- **Allocate square footage to meet current and future program needs with square feet per student at least meeting the national average.**
- Fund actual construction costs including mandated green building costs.
- **Fund construction costs resulting from new legislation and changes in class size or graduation requirements.**
- Allow limited improvement of not more than 10 percent of the current value of the facility, such as energy retrofits, in existing facilities without requiring a review and/or upgrade of the entire building to meet current codes in other areas; and,
- **Equalize funding for modernization of existing school facilities in lieu of abandonment and new construction.**
- (Adopted 2001; Amended 2008 and 2015)

# Next Step

- Please review & provide input, suggestions either via email, OneNote or call me. Same for questions & clarifications on any proposal.
- Especially need input on Sequim's top Ten Legislative Priorities.
- 2<sup>nd</sup> reading will occur at next Board Meeting on 18 Sept.
- We need a vote for approval as presented or with amendments.
- Legislative Assembly scheduled for the 22-23<sup>rd</sup> SEPT in Tukwila.



**THANK YOU!**